

Responsive and resilient networks: a solid basis for a strong safety culture

Colloquium Strategic Defence Committee
April 19th, 2023



Gouverneur
Provincie Antwerpen
Cathy Berx

1.

Antwerp: strategic position

Strategic position Port: Back then...



... and now

- **Logistic hub** for cargo flows from all over the world: dense and diverse infrastructure network
- Engine for **economic welfare**
- Very densely populated / very large and 'varying' number of employees
- Major **military strategic** interest



Gouverneur
Provincie Antwerpen
Cathy Berx

Brief risk analysis

→ 'Static' risks:

Petrochemical cluster, nuclear power plant, port, infrastructure (port infrastructure, railways, waterways, motorways,...)

→ 'Dynamic' risks:

- Globalisation & openness (flows of people, goods: target cybercrime, importance integrity and access control)
- Drug trafficking
- Weather extremes (drought) due to climate disruption,
- New energy sources → complex new risks: hydrogen, ammonia, wind turbines
- Environmental damage: PFAS, ...
- Societal polarisation in disruptive times of transition

→ Antwerp region: **pioneer** in “**safety culture**”



Gouverneur
Provincie Antwerpen
Cathy Berx

2.

Robust network civil security – *safety*

Role of governor as commissioner federal government



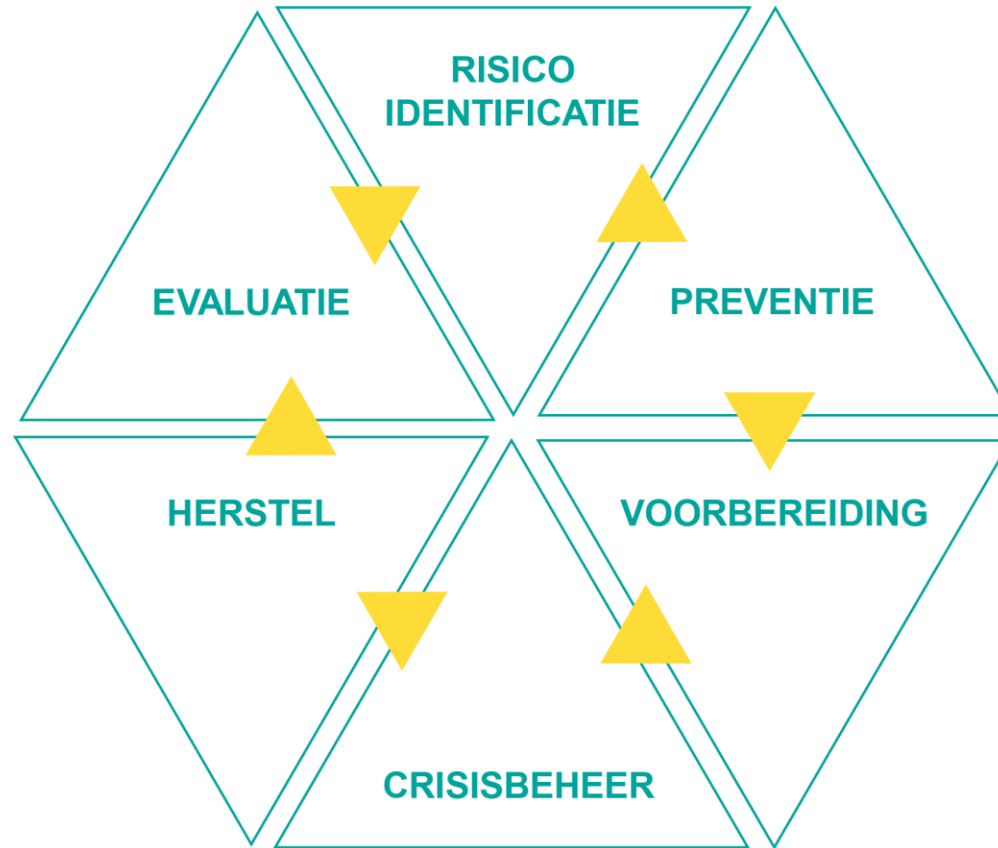
Civil security/safety:

- **Emergency planning and crisis management**
- Emergency response zones: selection, evaluation Zone Commander & cooperation with and between ERZ
- SEVESO/nuclear fund (industry/ENGIE resources for investments to prevent and manage seveso-related and nuclear incidents/accidents)
- Cooperation mayors: training, consultations, working visits
- Cooperation National Crisis Centre / DG Civil Security
- Cooperation/knowledge exchange fellow governors: conference of governors, sounding board on new laws and regulations (IBOBBO)
- Cooperation and consultation industry
- Training and education: Campus Vesta



Emergency planning and crisis management

1. Risk cycle



Source: National Crisis Center



Gouverneur
Provincie Antwerpen

Cathy Berx

Emergency planning and crisis management

2. Network = key



Gouverneur
Provincie Antwerpen

Cathy Berx

Emergency planning and crisis management

3. Federal service EP of the Governor

Provincial civil security policy:

- **Preparation, participation, follow-up Provincial Safety Cell (PVC)**
- **Preparation of emergency and intervention plans**
- Exercise policy
- Crisis management and Crisis and risk communication (BE-Alert)
- Support to local authorities and partner organisations
- Professionalisation of the work field (Emergency Planning coordinator + D5)
- Multidisciplinary cooperation
- Cross-border cooperation (The Netherlands)
- ...

Essential link in the **civil security ecosystem** (+ emergency planning coordinators, operational services, companies, knowledge institutions, ...)



Gouverneur
Provincie Antwerpen
Cathy Berx

Emergency planning and crisis management

4. Provincial Safety Cell (PVC)

Statutory network crucial safety partners:

- Provincial governor (chair)
- D1 - fire brigade assistance operations
- D2 - medical, sanitary and psychosocial assistance
- D3 - police management of the emergency site
- D4 - logistical support (civil protection/defence)
- D5 - information to the population (crisis communication)
- Prosecutor's office

Bottlenecks, challenges, consulted and shared responses on emergency planning and crisis management.



Robust network civil security – safety

5. Emergency- and Intervention Plans

General Emergency and Intervention Plan (ANIP)

Special Emergency and Intervention Plans (BNIPs)

- Specific risks - specific preparations - specific procedures and partners
- For risks in and around port: Seveso, nuclear (provincial translation of the national nuclear emergency plan and coordination with East Flanders), Lower Scheldt, terror, railway incidents,...
- Subject of further reflection/research: integrated BNIP for port and its petrochemical cluster with a view to interference and interaction between risks → cf. also fire network Seaport Scheldt (ERZ Antwerp/Waasland-Industry, with Seveso fund contribution)



Gouverneur
Provincie Antwerpen
Cathy Berx

Crisis management @provincial level

6. Provincial Coordination Committee (CC-Prov)

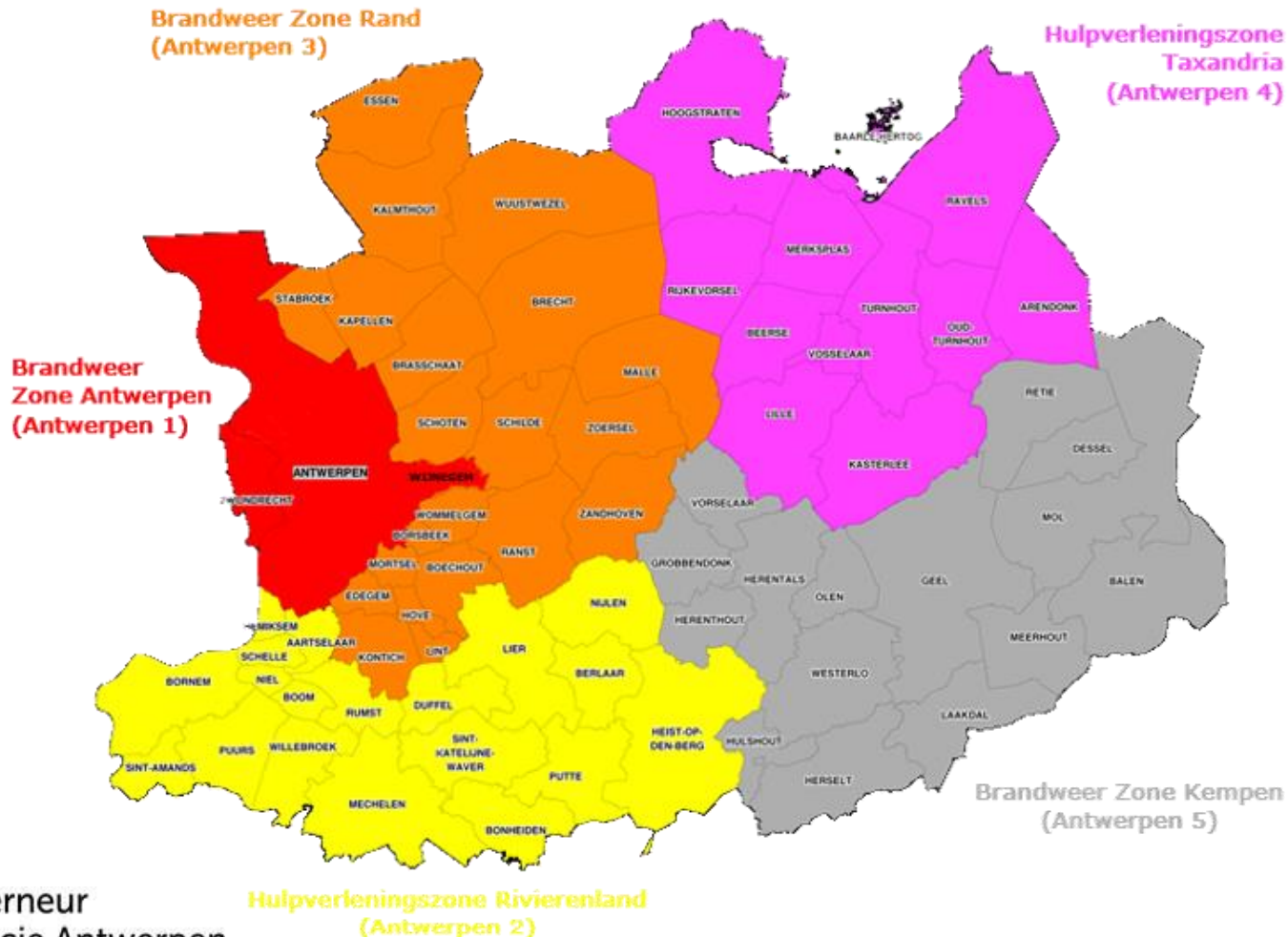
- Governor (chair)
- Representation D1, D2, D3, D4 and D5
- Representation Emergency Planning Department
- Possibly supplemented by experts
- Emergency and intervention plans available (crisis portal)
- Trusted network of people interacting with each other
- Process as pillar security community:
Shared language & methodology: IBOBBO; consultation, finding solutions together, practising and evaluating, defining and integrating areas for improvement,...

→ Knowledge/appreciation of each other's operation/competence & good organisational structure = key to efficiently handle crisis situations together.



Emergency planning and crisis management

7. 5 network-driven Emergency Response Zones Antwerp



Gouverneur
Provincie Antwerpen

Cathy Berx

3.

Robust network - *security*

Role of governor as commissioner federal government

Security:

- Prevention
- Public order & (traffic) safety
- Administrative enforcement undermining crime
- Surveillance and policing
- Weapons



Gouverneur
Provincie Antwerpen
Cathy Berx

Robust network - security

1. Antwerp security network and specific actions

- Provincial Security Consult (PVO):
 - Governor/prosecutor general (presidents)
 - Prosecutor's Office
 - DIRCO
 - DIRJUD
 - Chiefs of police districts from the 3 regions
 - Police liaison officers
 - Mayors
 - Campus Vesta
- Province-wide approach to undermining crime: role of ARIEC
- Stroomplan 2.0
 - Fight against drugs
 - Drug plantations, drug labs and waste dumping reporting point



Robust network - security

2. International Ship & Port Facility Security (ISPS)

- National Authority Maritime Security :
responsible for the overall maritime safety policy
- Local Committees Maritime Security :
local committees for Belgium's major ports, including Antwerp
+ Defence & Antwerp provincial commander



4.

Citizen participation

Citizen participation - from BIN to broad citizen safety networks

1. Volunteers in times of crisis

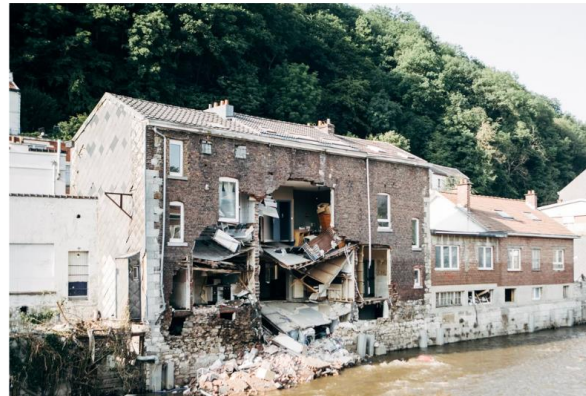
van je horen

vr̃ nws

DeMorgen.
IN HET NIEUWS | BETER LEVEN | MENINGEN | POLITIEK | OORLOG IN OEKRAÏNE | TV & CULTUUR | TI

Achtergrond Vrijwilligers Pepinster

Deze vrijwilligers trekken nog elke week naar Pepinster: 'Sommige mensen zijn er na anderhalf jaar ellende fel verzwakt'



GVA NIEUWS GEMEENTE SPORT CITTA BILLIE VIDEO ATV

Laakdal

☆ Maak van Laakdal jouw startgemeente! [KLIK HIER.](#)



© RTV

Vrijwilligers helpen burgers om zich te wapenen tegen cybercrime

Geel, Laakdal, Meerhout - Er gaat geen dag voorbij of cybercriminelen hebben weer een nieuwe methode gevonden om je je gegevens of geld te ontfutselen. Politiezone Geel-Laakdal-Meerhout zet twaalf vrijwilligers in die burgers weerbaarder moeten maken.

Hans Otten

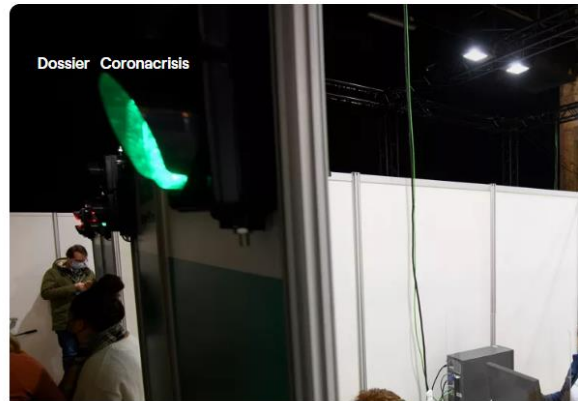
Dinsdag 29 maart 2022 om 13:12



Mieke Janssen uit Geel werd het slachtoffer van een vaak gebruikte oplichtingsmethode op sociale media. "Ik had een bed te koop geplaatst op Marketplace van Facebook. Binnen de minuut reageerde ene Ernesto dat hij het bed absoluut wilde hebben en daarom zelfs 10 euro meer wilde geven. Zijn voorwaarde was wel dat de levering zou gebeuren via een transportdienst waarmee hij eerder samenwerkte. Die zou contact nemen via Whatsapp."

Meer dan helft vrijwilligers uit vaccinatiecentra Turnhout en Weelde willen zich blijven engageren na corona

In het vaccinatiecentrum van Turnhout stellen een 30-tal organisaties zich vanavond voor aan heel wat vrijwilligers die actief waren in de vaccinatiecentra van Weelde en Turnhout. "Bijna de helft van onze vrijwilligers van het vaccinatiecentrum wil zich blijven inzetten als vrijwilliger, daarom organiseren we een avond om uitleg te geven over verschillende



Dossier Coronacrisis

Archleffoto
CLJ

Citizen participation – also in safety

2. Working on broad security culture: for, by and with citizens and the wider civil society

- Regulatory framework to involve citizens in emergency planning and crisis management
- New focus/task of governors: supporting local governments in implementation/application in practice
- 'Stakeholder management': 'detection' and cooperation with large and diverse number of actors
- Citizen participation: bottom-up in optimal context (insurance, equity in support to victims, protection volunteers...)
- Maximum involvement throughout the entire risk cycle



Citizen participation – National Reserve

3. Working on expanded National Reserve

*"Ideally, this reserve should be part of a broader project **to increase the resilience** of our country. (...)*

*A territorial reserve force is a first step towards **making our society more resilient again** to the crises that will inevitably emerge.*

*It should be part of **a broader security strategy**, taking into account other areas such as education, industry and climate change.*

*It could be **part of a broader civilian service.**"*

De Tijd, 30-03-2023



Gouverneur
Provincie Antwerpen
Cathy Berx

5.

Defence in province of Antwerp

Defence in province Antwerp: partner and pillar

- Covid-19: support in residential care centres
- Deployment terror: support under police jurisdiction
- Support to customs (fight against drugs)
- Security at nuclear sites
- Deployment of special units in consultation with Port Security Officers to test weaknesses in security at business sites:
 - Enthusiastic cooperation from companies
 - Good example of networking
 - Satisfies social importance of a secure port
- Securing NATO pipelines



6.

Concluding...

Everything hinges on readiness and resilience

- **People make the difference:**
 - Always assume/have confidence in the strength of partners
 - Build networks that reinforce and complement each other
 - Recognise the expertise, competence and interdependence of partners
- **Possibilism:**
 - Think in terms of possibilities and solutions
 - Constraints and limits are an important starting-not ending point
- **Dare:**
 - Think out-of-the box
 - Involve civil society

➔ Be aware to new risks; be honest and clear about objectives. Leave (much) room for implementation to and support 'the field', emergency services and civic initiatives.



Thank you!

Contact:

Gouverneur Cathy Berx
Koningin Elisabethlei 22
2018 ANTWERPEN

Cathy.Berx@provincieantwerpen.be